

Oregon Department of Transportation 2016 Disparity Study



June 2, 2015
External Stakeholder Group
Update Meeting

David Keen, Principal
Leigh Shuldberg, Consultant
Patrick Harris, Consultant
Colin Lamb, Consultant
Keen Independent Research LLC
100 Fillmore St., 5th Floor
Denver CO 80206
303-385-8515
928-684-3021 (fax)
dkeen@keenindependent.com
leigh.shuldberg@keenindependent.com
patrick.harris@keenindependent.com
colin.lamb@keenindependent.com

Suzanne Donaldson-Stephens
Donaldson Enterprises

Juanita Walton
Benetti Partners

Stacy Thomas
JLA Public Involvement



Objectives for External Stakeholder Group Update Meeting

1. Recap study scope and purpose and January 29 meeting
2. February public meetings and other public input
3. New approach to availability list and calls
4. Communication and outreach update
 - Email blast, other ongoing communication
 - Study website, email address and hotline
5. In-depth interview update
6. ODOT contract data collection update
7. Analysis of marketplace data
8. Study schedule update
9. Q & A
10. Next External Stakeholder Group meeting

1. Recap study scope and purpose

- ODOT must implement the Federal DBE Program, per 49 CFR Part 26
- Disparity study provides information to help ODOT:
 - Set overall goal for DBE participation on FHWA-funded contracts
 - Consider whether ODOT can achieve overall DBE goal solely through neutral means
 - If ODOT needs to continue DBE contract goals, assess the specific race/ethnic/gender groups eligible for that program component
- USDOT instructed agencies to conduct disparity studies after 2005 Ninth Circuit decision in *Western States Paving v. Washington State DOT*
 - Example of successful defense of Program: *AGC, San Diego v. Caltrans*
 - Dave Keen led Caltrans disparity study and provided expert testimony, Keith Wiener was legal advisor, analyzed qualitative information and provided litigation support
- Also, outside review of ODOT practices and other policies is useful

1. Recap January 29 meeting

- Recap of December 3 meeting
- Overview of December through January progress
- Updated study schedule
- Communication and outreach update
- Approach to construction and A&E contract and subcontract data collection
- Relevant geographic market area and subindustries
- Availability interviews with Oregon businesses
- In-depth interview question examples

2. February public meetings and other public input

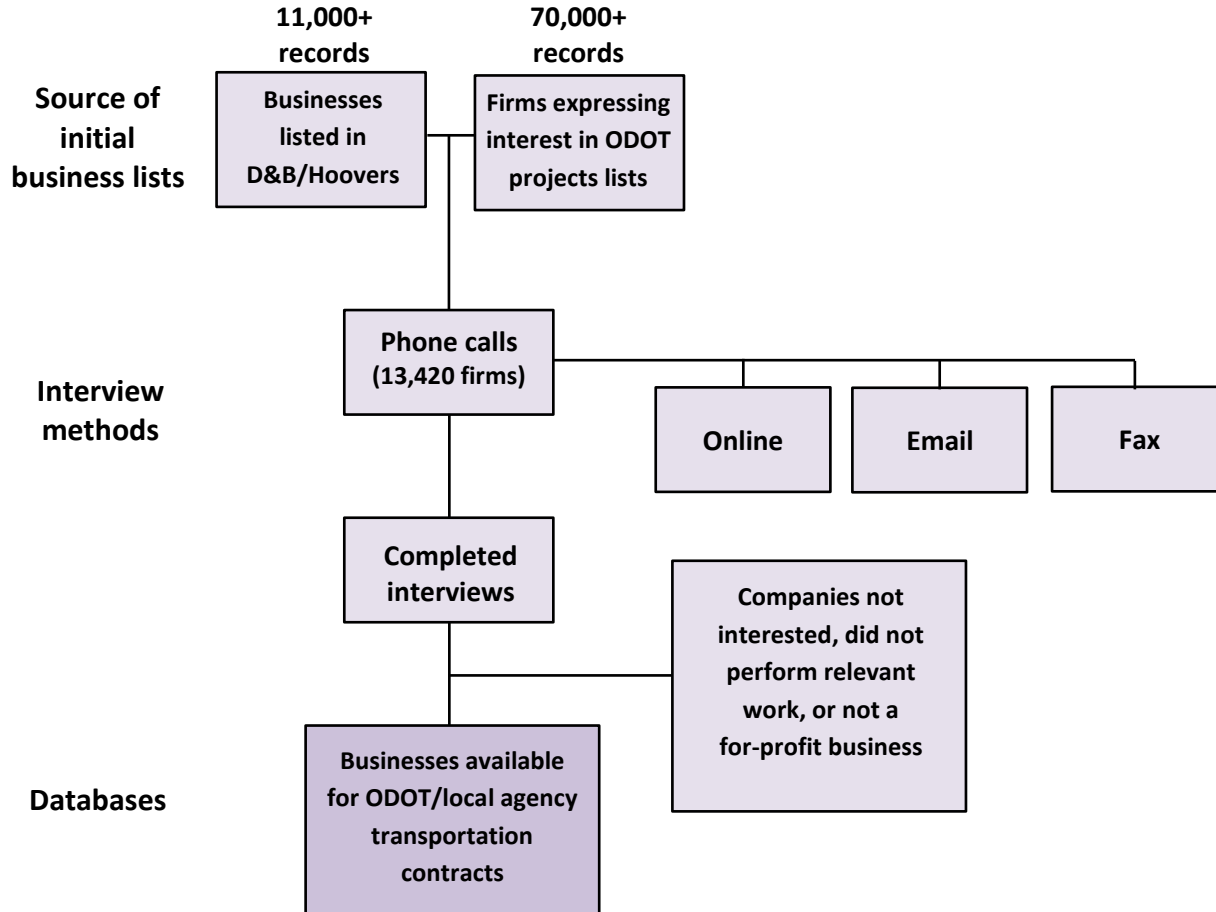
- Public meetings:
 - February 23 – Bend
 - February 24 – Roseburg
 - February 25 – Salem
 - February 26 – Portland
 - Online option
- Trade association meetings



2. Contribution of ESG and public input to study design

- Inclusion of February 2015 public meetings in study process
- Expansion of list of firms contacted as part of availability survey (not just D&B list)
- New types of firms to be included in in-depth interviews
- Development of interview guide for in-depth interviews
- Modifications to project schedule to accommodate these changes
- More public distribution of information, such as of list of firms to be contacted in availability survey

3. New approach to availability list and calls



<http://www.odotdbestudy.org/>

4. Communication and outreach update

- Trade association meetings
- Public meetings
- E-blast
- Website: www.odotdbestudy.org
- Email: info@www.odotdbestudy.org
- Hotline: 503-660-8865
- Press release

5. In-depth interview update

- Developed matrix of types and locations of firms to be interviewed
- Prepared interview guide (after reviewing public meeting input)
- Trained subconsultants who will conduct the interviews
- Conducted five initial interviews in Portland on May 4th and 5th
- Revised interview guide based on initial interviews
- Additional firm in-depth interviews will be performed after availability surveys provide more potential interviewees
- Firms selected to participate from those who agreed to participate during availability survey
- Trade association in-depth interviews will begin in June

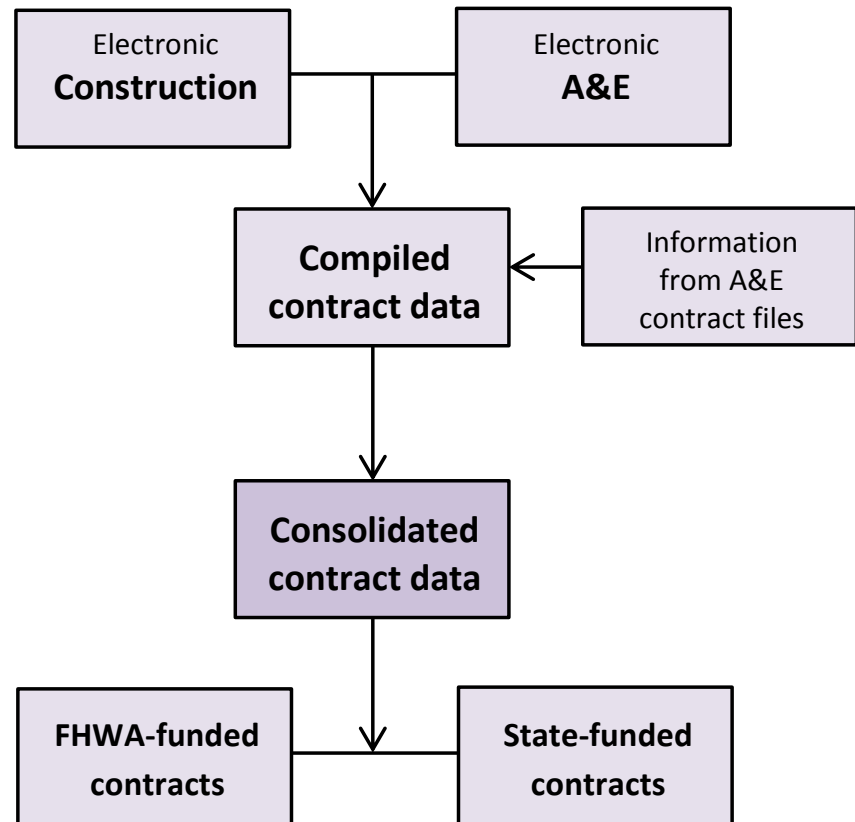
6. ODOT data collection update

Transportation-related contracts

Study period: Oct. 2010 through Sept. 2014

Prime contracts and subcontracts

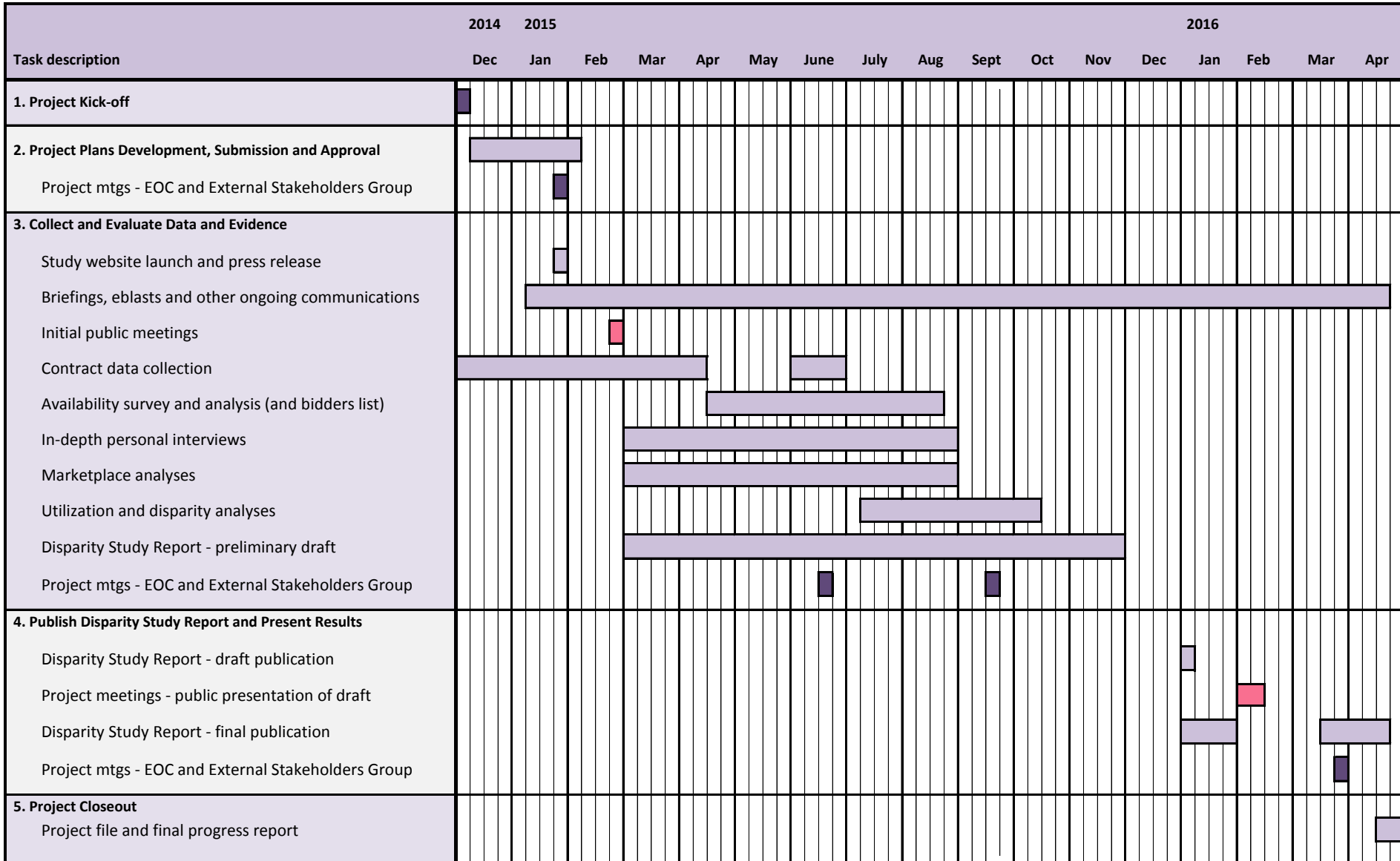
Includes contract dollars for
local agencies



7. Analysis of marketplace data

- Relevant geographic market area has been determined:
 - All of Oregon
 - Two counties in Washington within the Portland MSA (where data allow)
- Currently analyzing home mortgage loan data and other lending information
- In June, will begin analyzing Census data on entry, advancement and business ownership for construction and engineering
- Will also examine Census data on business success (mid-summer)
- Will analyze information about the marketplace from the availability survey after the completion of the survey (mid-summer)

8. Study schedule update



9. Q&A



10. Next External Stakeholder Group meeting

- September 22, 2015
- Items for discussion will include:
 - Utilization and availability analysis
 - Disparity analysis
 - Analysis of qualitative information from in-depth interviews and other sources
 - Review of ODOT programs
 - Remaining study schedule